

signature

BY BUILDCO



signature
BY BUILDCO

LOCATION 04

GALLERY 05

ARCHITECTURAL PLANS 07

Ground Floor

Apartments 1st Floor

Apartments 2nd Floor

Apartments 3rd Floor

Apartments 4th Floor

Roof Plan

TABLE OF SQ.M 17

INTERIOR GALLERY 18

CONTACT 28





Welcome to the **Signature**, a brand new property where modern elegance meets unparalleled comfort. Nestled at one of the most booming constructed location in Limassol, this sophisticated apartment complex of 16 supreme apartments redefines luxury living with its exquisite design and lavish amenities. From the lobby level up to the last floor you're greeted by a breathtaking ambiance of contemporary architecture and upscale decor, in combination with the element Each apartment is meticulously crafted with the utmost attention to detail. After a long day, the design of the complex boasts an array to enhance your lifestyle, due to exclusive amenities and private gardens where residents can escape the stresses of daily life.

Welcome home!

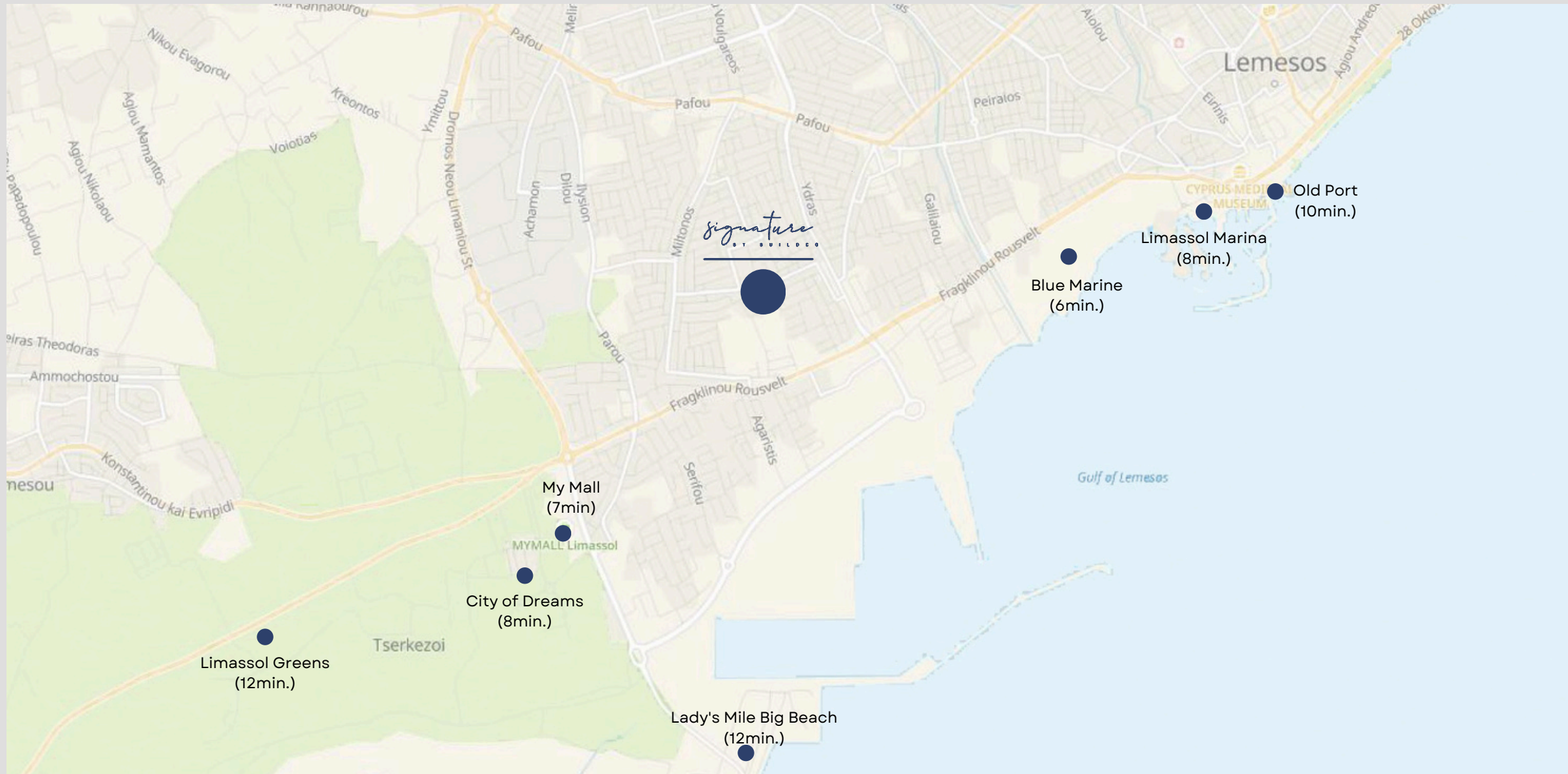
- 1 AND 2 BEDROOM APARTMENTS

- GYM, POOL, PRIVATE GARDENS

- ENERGY EFFICIENCY: A

- PHOTOVOLTAIC PANELS INCLUDED

LOCATION



Signature by BuildCo Cyprus is located at one of the most popular areas of Limassol, in Zakaki Area, where luxury living meets the vibrant energy of the city. Our premier apartment complex offers an unbeatable location that combines convenience with a cosmopolitan lifestyle.

The plot is located close to Limassol Marina, My Mall, the City of Dreams, the Limassol Greens and other popular areas. Except the sea view from the comfort of the large terraces of the top floors, Lady's Mile Beach is only 4.8 km away. The location provides easy access to all amenities and services of the area.

Pharmacy	550 m.
Groceries	800 m.
Courier	900 m.
Jumbo	3.4 km.
Playground	3.7 km.

GALLERY



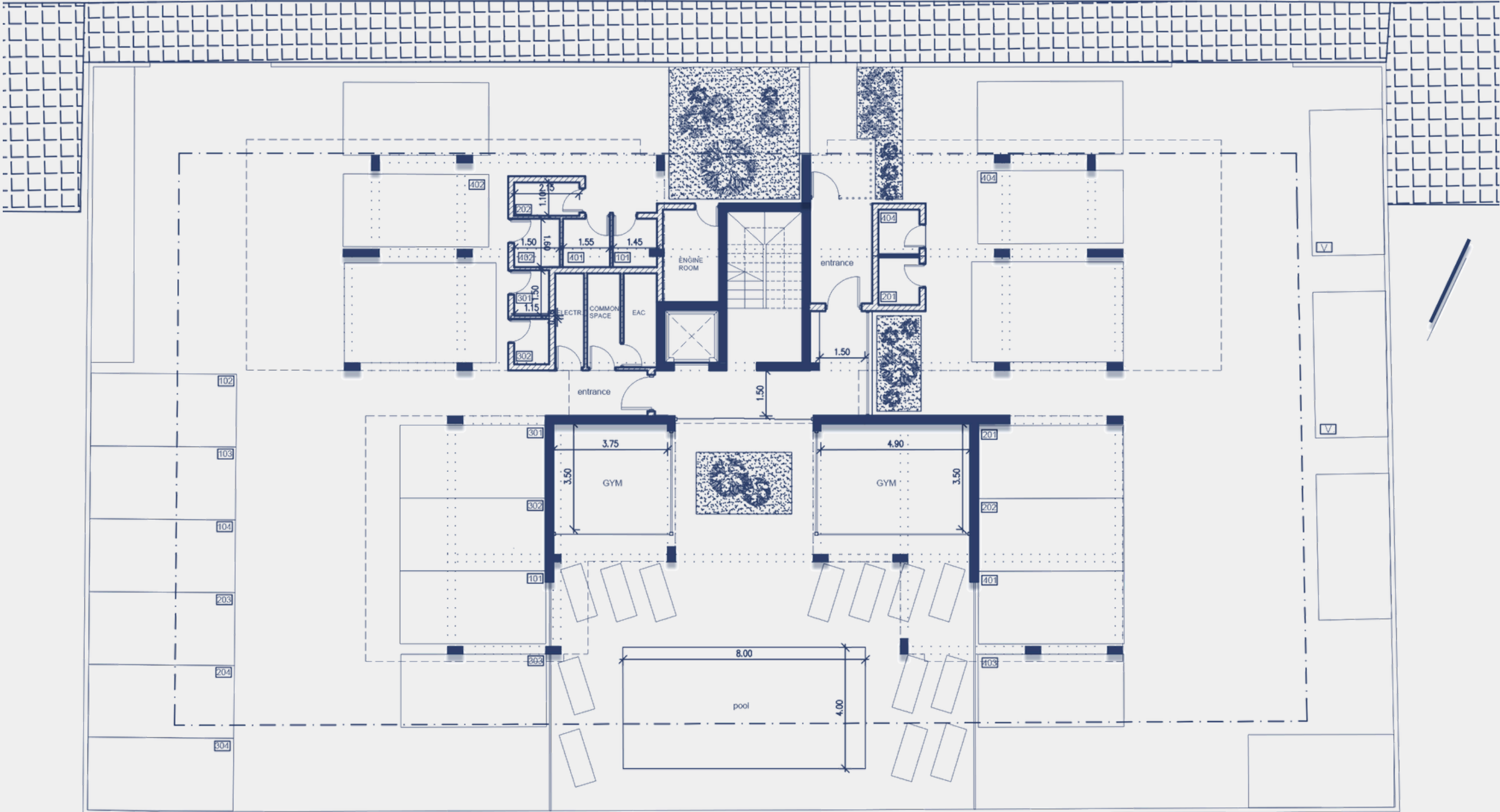
GALLERY



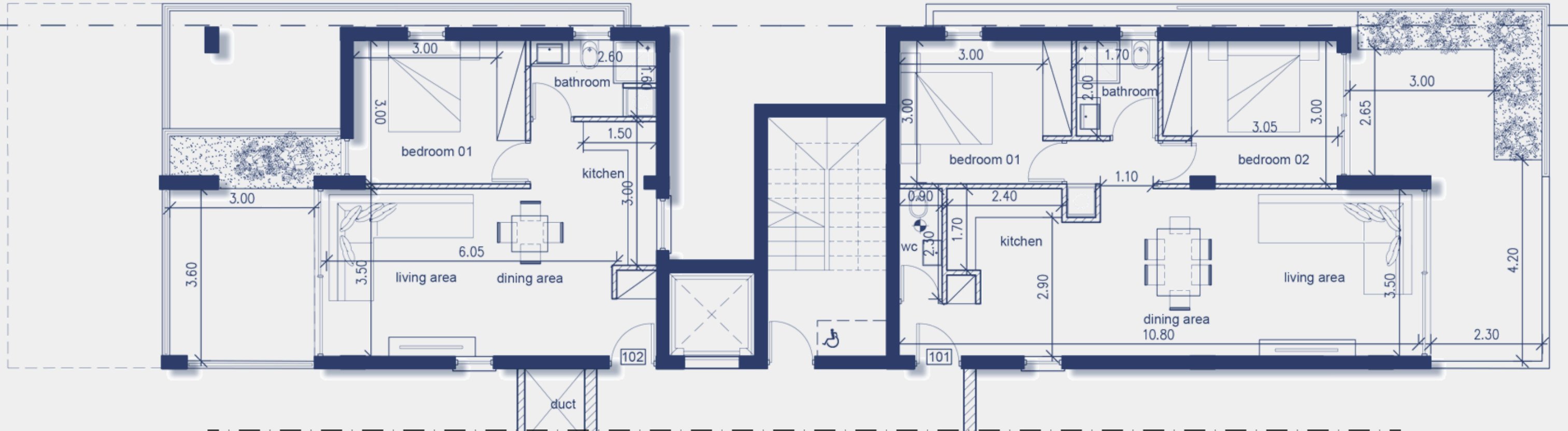
ARCHITECTURAL PLANS

Ground Level

Parking, storage spaces, the main entrance of the building, gym and pool



ARCHITECTURAL PLANS



APARTMENT 102 **1st Floor**

Bedrooms: 1

Interior Area: 50 sq.m

Covered Veranda: 11.9 sq.m

Private Garden: 3.50 sq.m

Bathroom: 1

Parking: 1

Total Area: 65.4 sq.m

APARTMENT 101 **1st Floor**

Bedrooms: 2

Interior Area: 75 sq.m

Covered Veranda: 18.3 sq.m

Private Garden: 5.40 sq.m

Bathroom: 1

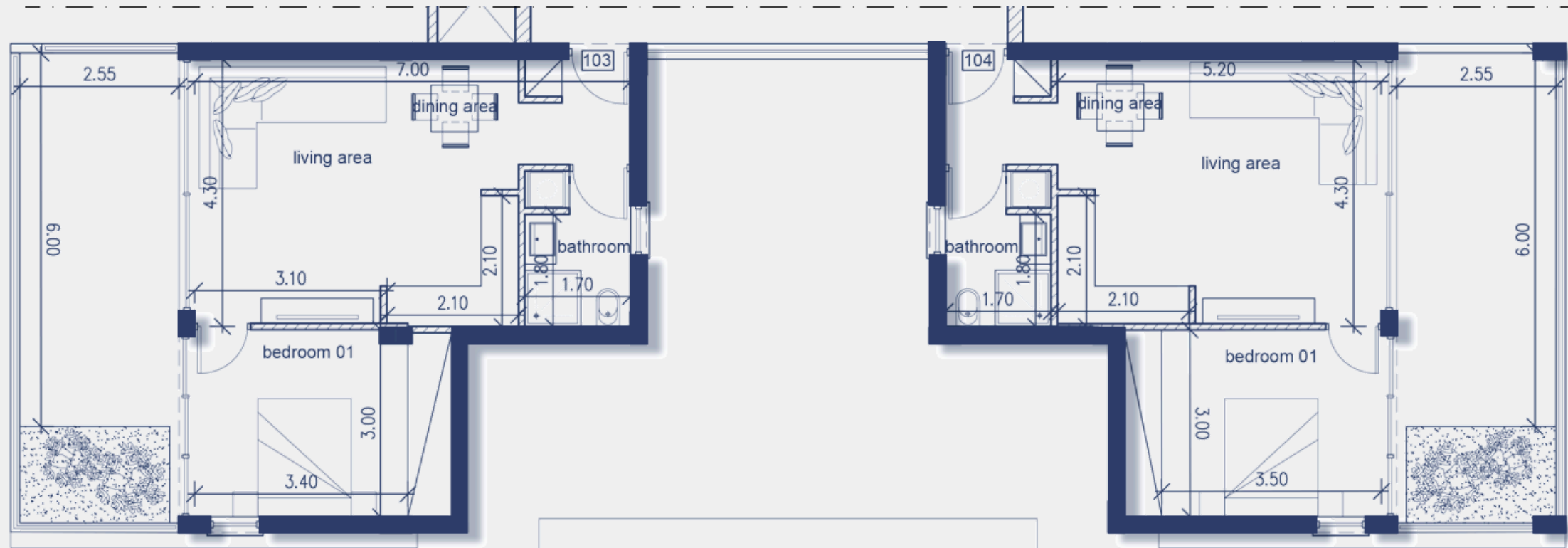
WC: 1

Covered Parking: 1

Storage: 2.7 sq.m

Total Area: 101.4 sq.m

ARCHITECTURAL PLANS



APARTMENT 103 **1st Floor**

Bedrooms: 1

Interior Area: 50 sq.m

Covered Veranda: 16.6 sq.m

Private Garden: 3.70 sq.m

Bathroom: 1

Parking: 1

Total Area: 70.3 sq.m

APARTMENT 104 **1st Floor**

Bedrooms: 1

Interior Area: 50sq.m

Covered Veranda: 16.6 sq.m

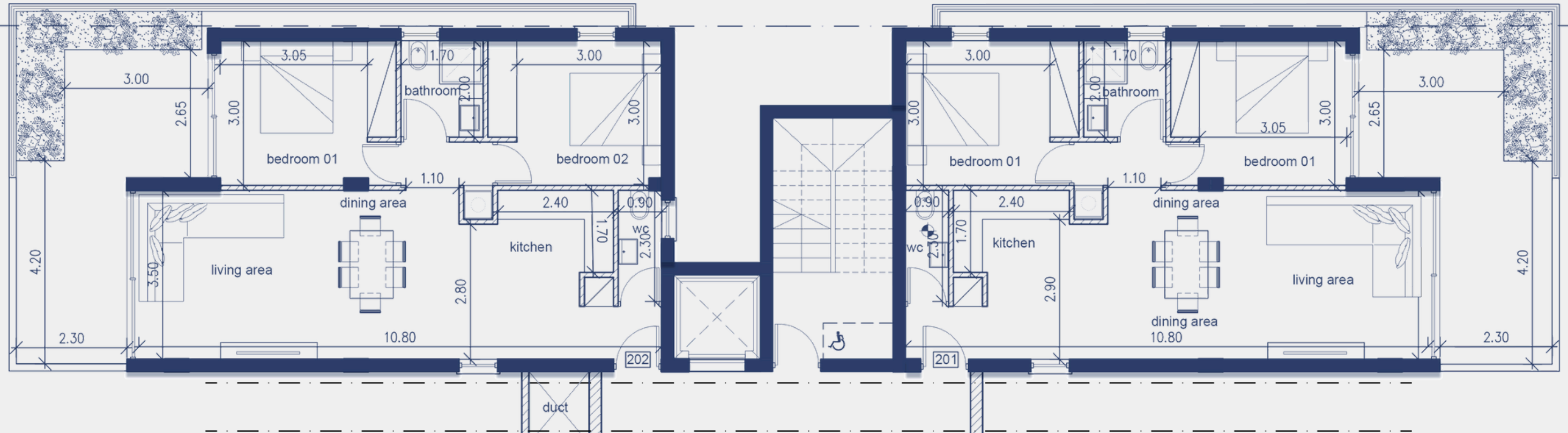
Private Garden: 3.70 sq.m

Bathroom: 1

Parking: 1

Total Area: 70.3 sq.m

ARCHITECTURAL PLANS



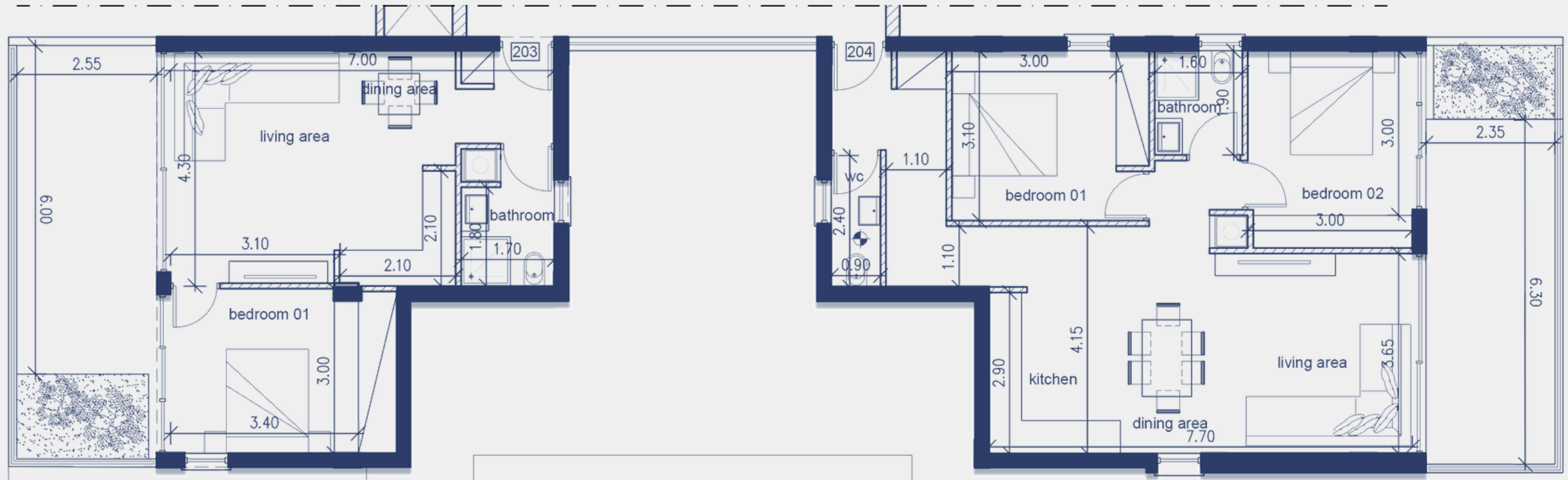
APARTMENT 202 **2nd Floor**

Bedrooms: 2
 Interior Area: 75 sq.m
 Covered Veranda: 18.1 sq.m
 Private Garden: 5.40 sq.m
 Bathroom: 1
 WC: 1
 Covered Parking: 1
 Storage: 3.4 sq.m
Total Area: 101.9 sq.m

APARTMENT 201 **2nd Floor**

Bedrooms: 2
 Interior Area: 75 sq.m
 Covered Veranda: 18.3 sq.m
 Private Garden: 5.40 sq.m
 Bathroom: 1
 WC: 1
 Covered Parking: 1
 Storage: 3.0 sq.m
Total Area: 101.7 sq.m

ARCHITECTURAL PLANS



APARTMENT 203 **2nd Floor**

Bedrooms: 1

Interior Area: 50 sq.m

Covered Veranda: 16.6 sq.m

Private Garden: 3.70 sq.m

Bathroom: 1

Parking: 1

Total Area: 70.3 sq.m

APARTMENT 204 **2nd Floor**

Bedrooms: 2

Interior Area: 75 sq.m

Covered Veranda: 16.1 sq.m

Private Garden: 3.00 sq.m

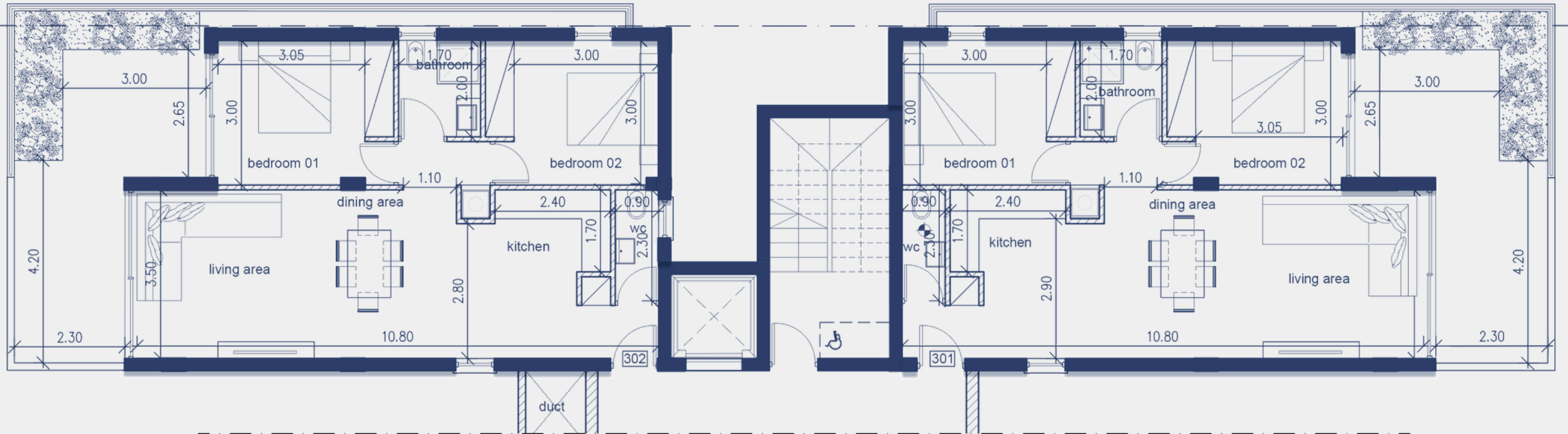
Bathroom: 1

WC: 1

Parking: 1

Total Area: 94.1 sq.m

ARCHITECTURAL PLANS



APARTMENT 302 **3rd Floor**

Bedrooms: 2

Interior Area: 75 sq.m

Covered Veranda: 18.1 sq.m

Private Garden: 5.40 sq.m

Bathroom: 1

WC: 1

Covered Parking: 1

Storage: 2.5 sq.m

Total Area: 101.0 sq.m

APARTMENT 301 **3rd Floor**

Bedrooms: 2

Interior Area: 75 sq.m

Covered Veranda: 18.3 sq.m

Private Garden: 5.40 sq.m

Bathroom: 1

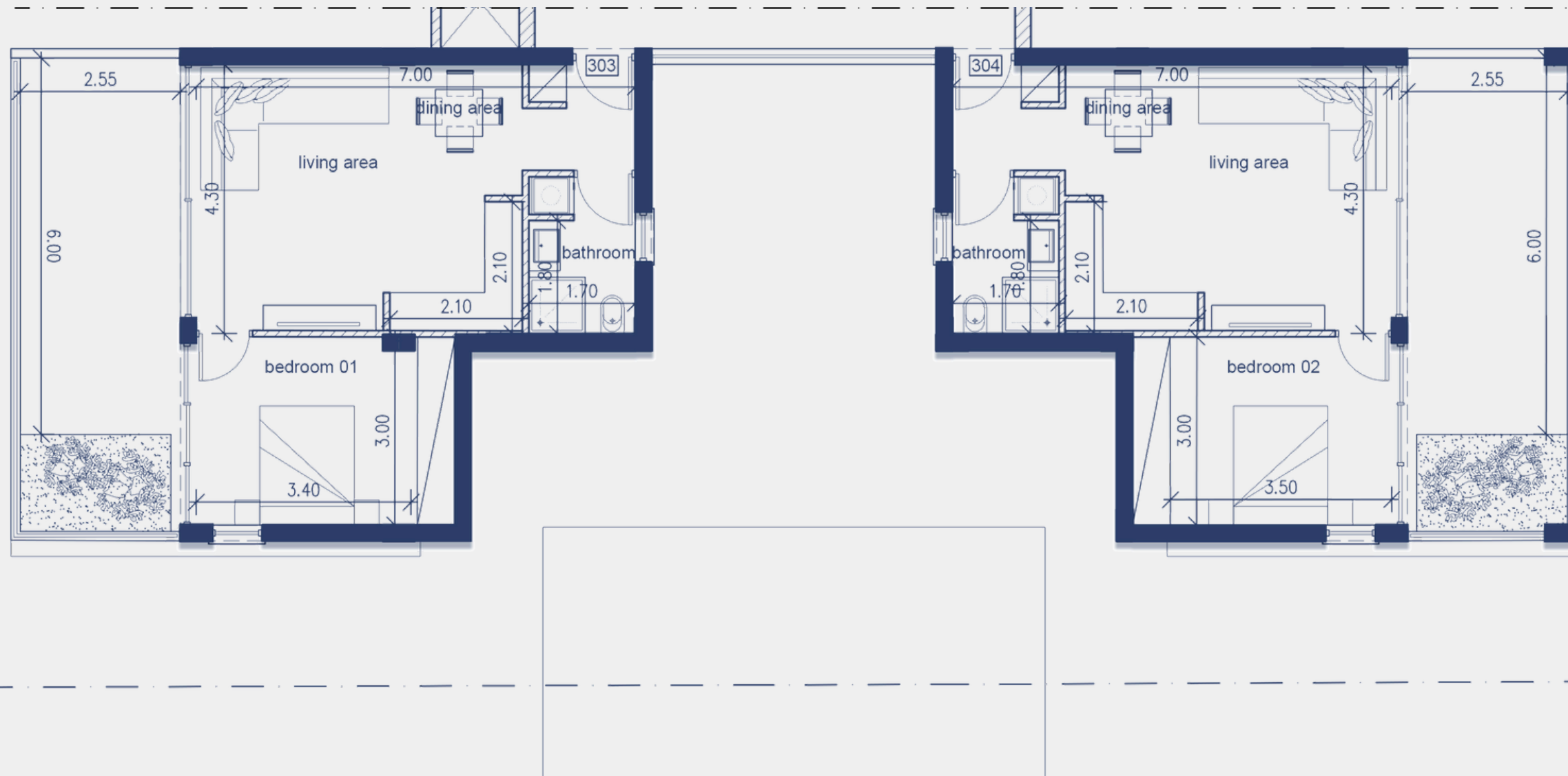
WC: 1

Covered Parking: 1

Storage: 2.2 sq.m

Total Area: 100.9 sq.m

ARCHITECTURAL PLANS



APARTMENT 303 **3rd Floor**

Bedrooms: 1

Interior Area: 50 sq.m

Covered Veranda: 16.6 sq.m

Private Garden: 3.70 sq.m

Bathroom: 1

Parking: 1

Total Area: 70.3 sq.m

APARTMENT 304 **3rd Floor**

Bedrooms: 1

Interior Area: 50 sq.m

Covered Veranda: 16.6 sq.m

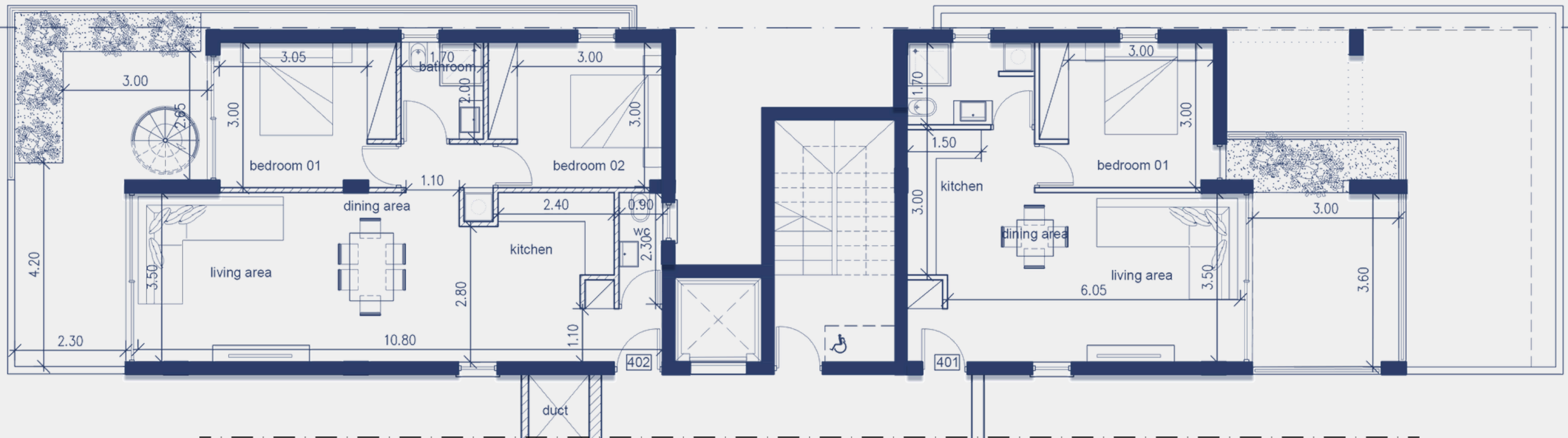
Private Garden: 3.70 sq.m

Bathroom: 1

Parking: 1

Total Area: 70.3 sq.m

ARCHITECTURAL PLANS



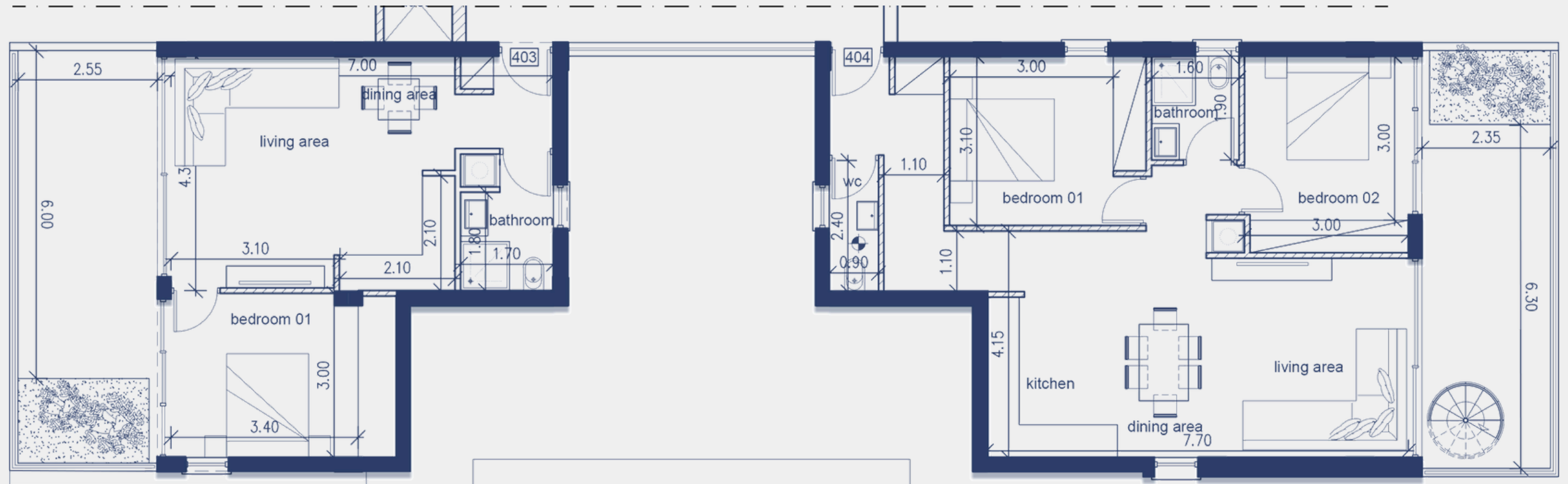
APARTMENT 402 **4th Floor**

Bedrooms: 2
 Interior Area: 75 sq.m
 Covered Veranda: 18.1 sq.m
 Private Garden: 5.40 sq.m
 Bathroom: 1
 WC: 1
 Covered Parking: 1
 Storage: 3.0 sq.m
 Roof Garden: 53.0 sq.m
Total Area: 154.5 sq.m

APARTMENT 401 **4th Floor**

Bedrooms: 1
 Interior Area: 50 sq.m
 Covered Veranda: 11.9 sq.m
 Private Garden: 3.50 sq.m
 Bathroom: 1
 Covered Parking: 1
 Storage: 2.8 sq.m
Total Area: 68.2 sq.m

ARCHITECTURAL PLANS



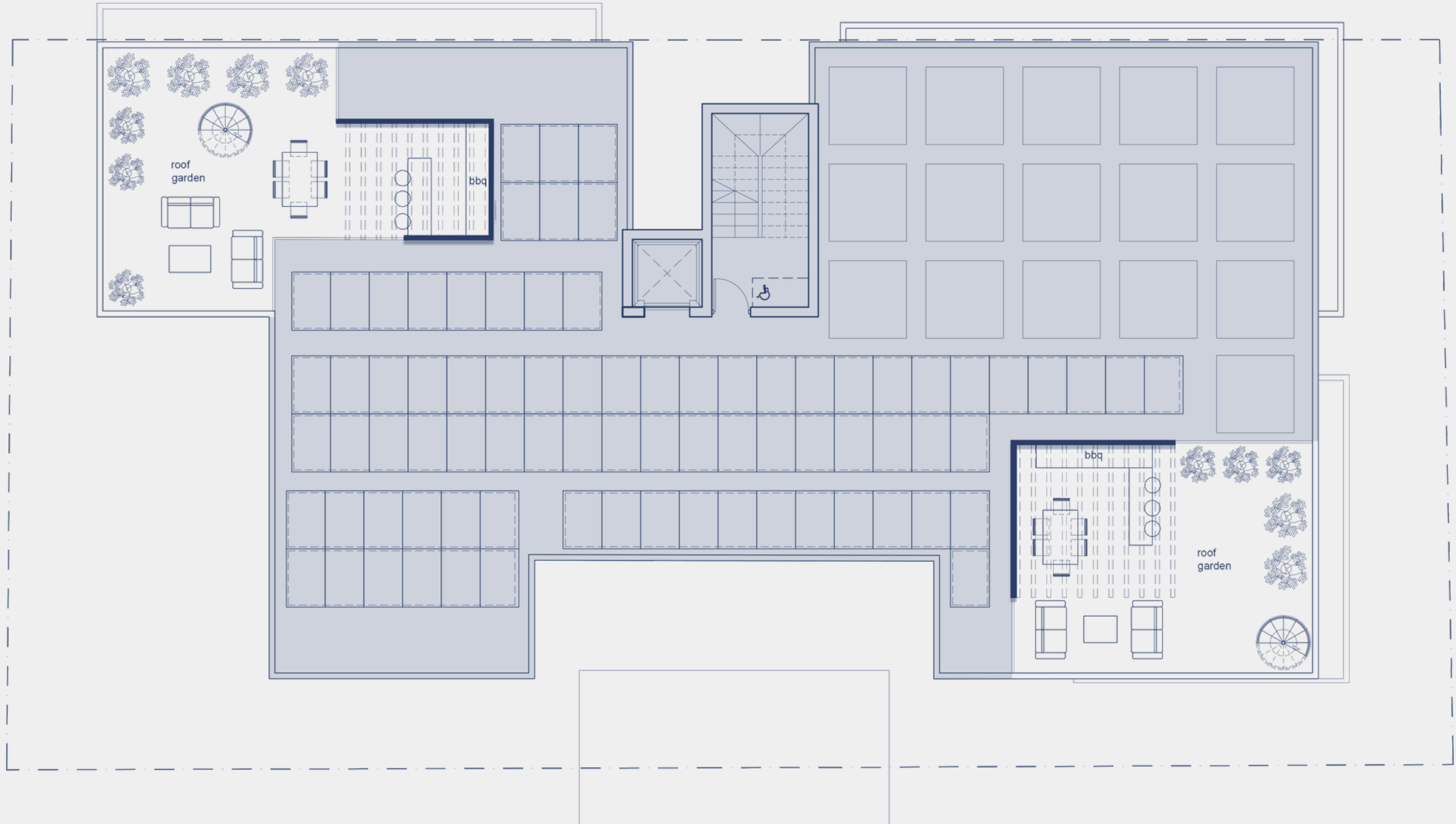
APARTMENT 403 **4th Floor**

Bedrooms: 1
 Interior Area: 50 sq.m
 Covered Veranda: 16.6 sq.m
 Private Garden: 3.70 sq.m
 Bathroom: 1
 Parking: 1
Total Area: 70.3 sq.m

APARTMENT 404 **4th Floor**

Bedrooms: 2
 Interior Area: 75 sq.m
 Covered Veranda: 16.1 sq.m
 Private Garden: 3.00 sq.m
 Bathroom: 1
 WC: 1
 Covered Parking: 1
 Storage: 3.0 sq.m
 Roof Garden: 48.7 sq.m
Total Area: 145.8 sq.m

ARCHITECTURAL PLANS



APARTMENT 402
4th Floor

Roof Garden: 53.0 sq.m

APARTMENT 404
4th Floor

Roof Garden: 48.7 sq.m

	1st floor				2nd floor				3rd floor				4th floor			
Apartment	<u>101</u>	<u>102</u>	<u>103</u>	<u>104</u>	<u>201</u>	<u>202</u>	<u>203</u>	<u>204</u>	<u>301</u>	<u>302</u>	<u>303</u>	<u>304</u>	<u>401</u>	<u>402</u>	<u>403</u>	<u>404</u>
Internal Area sq.m	75	50	50	50	75	75	50	75	75	75	50	50	50	75	50	75
Covered Veranda sq.m	18.3	11.9	16.6	16.6	18.3	18.1	16.6	16.1	18.3	18.1	16.6	16.6	11.9	18.1	16.6	16.1
Private Garden sq.m	5.4	3.5	3.7	3.7	5.4	5.4	3.7	3.0	5.4	5.4	3.7	3.7	3.5	5.4	3.7	3.0
Roof Garden sq.m														53.0		48.7
Storage Area sq.m	2.7				3.0	3.4			2.2	2.5			2.8	3.0		3.0
Total Area sq.m	101.4	65.4	70.3	70.3	101.7	101.9	70.3	94.1	100.9	101.0	70.3	70.3	68.2	154.5	70.3	145.8

GALLERY_1-BED APARTMENTS



GALLERY_1-BED APARTMENTS



GALLERY_1-BED APARTMENTS



GALLERY_1-BED APARTMENTS



GALLERY_1-BED APARTMENTS



GALLERY_2-BED APARTMENTS



GALLERY_2-BED APARTMENTS



GALLERY_2-BED APARTMENTS



GALLERY_2-BED APARTMENTS



GALLERY_2-BED APARTMENTS



GALLERY_2-BED APARTMENTS



CONTACT



Find us at our offices at:

Anexartisias & Athinon Corner , NORA COURT,
5th floor, Flat/Office 501
3605, Limassol, Cyprus