

"AN ELEVATED LIFESTYLE ABOVE THE CITY. A HORIZON WITHOUT LIMITS."

ERA URBAN HOMES

23
ATELIER



BUILDCO
NAME TO TRUST

” WELCOME

Welcome to ERA Urban Homes

Nestled in the serene hills of Agia Fyla, Limassol, ERA Urban homes redefines elevated living with panoramic sea views and timeless architectural elegance. This exclusive collection of luxury apartments blends modern design with natural beauty — offering a peaceful retreat just minutes away from the city’s vibrant center and coastline.

Crafted for those who value privacy, style, and sophistication, each residence is a statement of refined comfort, bathed in natural light and framed by sweeping vistas of the Mediterranean.

Welcome to a new era of living — where contemporary design meets understated luxury.

LOCATION

04

THE PLOT

05

ARCHITECTURAL PLANS

07

Ground Floor – parking

Apartments 1st Floor

Apartments 2nd Floor

Apartments 3rd Floor

Roof Garden

MOODBOARD

17

3D RENDERS

19

CONTACT

28

Location – Agia Fyla, Limassol

A serene escape, just minutes from the city.

A hillside haven with panoramic sea views.

Situated in the prestigious area of Agia Fyla, **ERA Urban homes** offers a balance of tranquility and urban connectivity.

Perched above the heart of Limassol, this elevated location provides breathtaking views of the Mediterranean while maintaining quick access to the city center, the highway, schools, and all essential services.

With its peaceful residential atmosphere, lush surroundings, and proximity to both the coastline and the mountains, Agia Fyla is one of Limassol's most desirable neighborhoods – ideal for families, professionals, and investors alike.

Whether you're gazing out toward the sea at sunset or enjoying the calm of the hills, life at ERA Urban homes is defined by perspective, elegance, and connection.



- Schools (private & public): 1-2 km / 3-5 minutes
- Shops & Supermarkets: 500 m – 1.5 km / 2-4 minutes
- General Hospital of Limassol: 2.5 km / 7 minutes
- Highway Access (A1): 1.2 km / 3 minutes
- Limassol Seafront & City Center: 5.5 km / 10-12 minutes
- Cafes, Gyms, Pharmacies: within 1 km
- My Mall Limassol: 10.5 km / 15-18 minutes
- Troodos Mountain Route: 25 km / 30 minutes



BUILDICO
NAME TO TRUST

ARCHITECTURAL PLANS

Ground Floor - Parking





Cozy elegance:
From the 1st floor, life opens gently.
A perfect blend of privacy, greenery, and distant horizon."

ARCHITECTURAL PLANS

1st Floor_ Apartment 101_50 SQM



Living Room	3,50 x 3,20 m ²
Kitchen_Dining	5,00 x 2,95 m ²
Bedroom	3,10 x 3,60 m ²
Bathroom	1,80 x 1,85 m ²
Covered Veranda	16 m ²

ARCHITECTURAL PLANS

1st Floor_ Apartment 102_50 SQM



Living Room	3,95 x 3,20 SQM
Kitchen_Dining	3,95 x 3,05 SQM
Bedroom	3,60 x 3,00 SQM
Bathroom	1,70 x 1,90 SQM
Covered Veranda	21 SQM
Garden	3 SQM

ARCHITECTURAL PLANS

1st Floor_ Apartment 103_51 SQM



Living Room	3,45 x 3,90 m ²
Kitchen_Dining	3,85 x 3,20 m ²
Bedroom	3,00 x 3,80 m ²
Bathroom	2,60 x 2,00 m ²
Covered Veranda	11 m ²



BUILDCO
NAME TO TRUST



A peaceful cityscape unfolds from the 2nd floor

Calm, open, and beautifully balanced.

ARCHITECTURAL PLANS

2nd Floor_ Apartment 201_78 SQM



Living Room	4,05 x 4,00 m2
Kitchen_Dining	3,70 x 4,00 m2
Master Bedroom	3,60 x 3,95 m2
Bathroom	2,45 x 1,50 m2
Bedroom	3,05 x 3,60 m2
Common Bathroom	1,85 x 1,70 m2
Covered Veranda	34 m2
Uncovered Veranda	4 m2
Garden	6 m2

ARCHITECTURAL PLANS

2nd Floor_ Apartment 202_76 SQM



Living Room	4,05 x 3,55 m2
Kitchen/ Dining	3,70 x 3,55 m2
Master Bedroom	3,90 x 3,00 m2
Bathroom	2,65 x 1,30 m2
Bedroom	3,80x 3,00 m2
Common Bathroom	2,60 x 1,60 m2
Covered Veranta	16 m2
Garden	3 m2
Roof Garden	43 m2

23
ATELIER

ERA
URBAN HOMES BY BUILDCO



BUILDCO
NAME TO TRUST



Captured from the 3rd floor

A panoramic sea view that elevates everyday living.

ARCHITECTURAL PLANS

3rd Floor_Penthouse 301_80 SQM



Living Room	3,70 x 4,10 m2
Kitchen_Dining	3,70 x 4,10 m2
Master Bedroom	3,05 x 5,10 m2
Bathroom	2,40 x 1,55 m2
Bedroom	3,60x 3,25 m2
Common Bathroom	1,90 x 2,20 m2
Covered Veranda	13 m2
Uncovered Veranda	21 m2
Roof Garden	29 m2

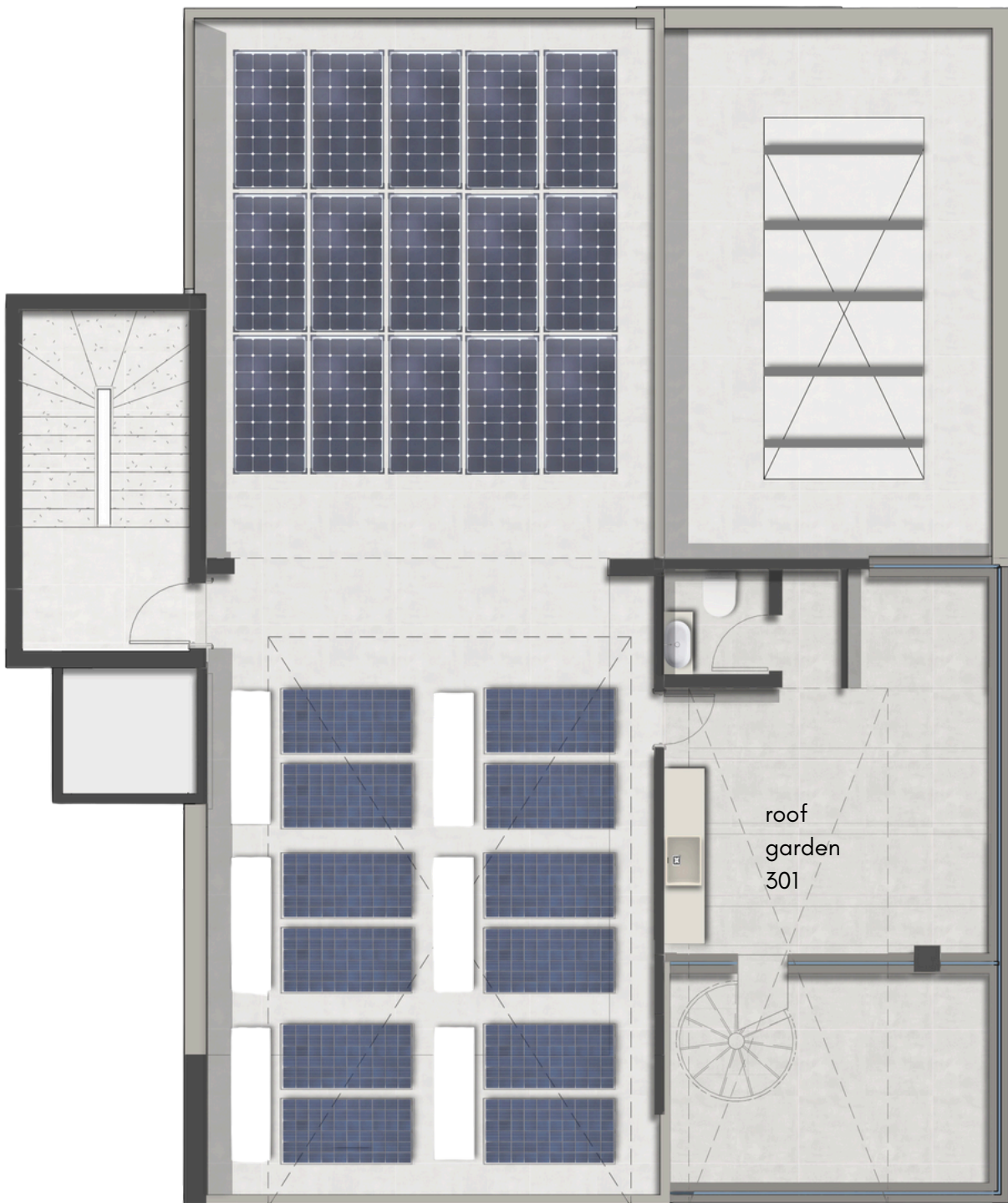


Roof Garden View - 4th Floor

Where the skyline meets serenity — the roof garden redefines outdoor living.

ARCHITECTURAL PLANS

ROOF GARDEN



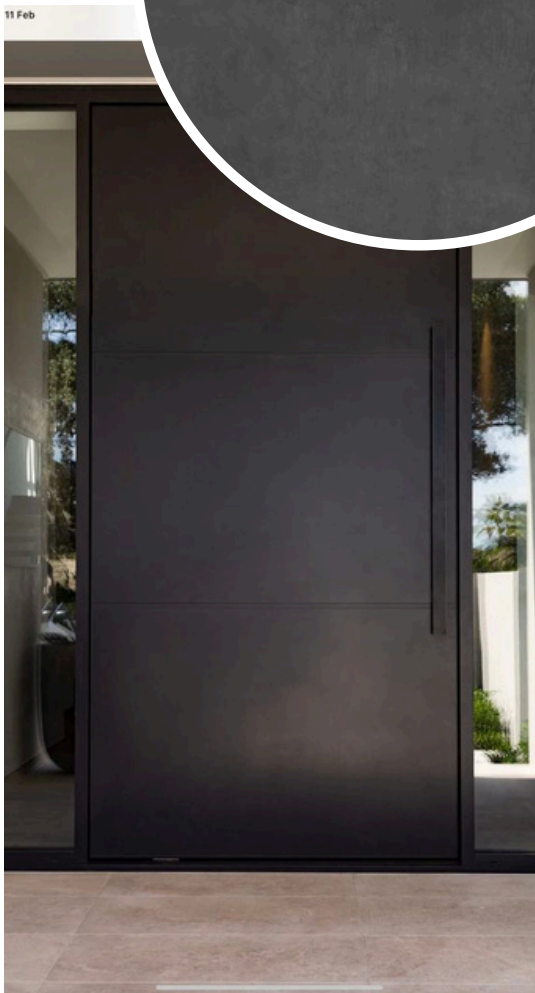
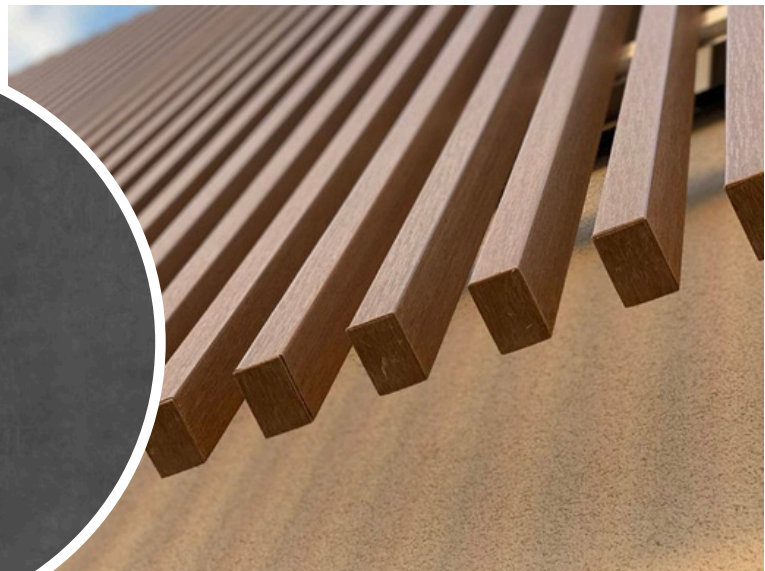
The rooftop of **ERA Urban Homes** offers more than just beautiful views — it's a thoughtfully designed space that combines lifestyle, comfort, and sustainability.

Enjoy a fully equipped barbecue area with a covered dining zone, ideal for relaxed evenings or private gatherings. Private storage room add extra convenience, making the rooftop both functional and enjoyable.

What's more, the roof is fitted with photovoltaic and solar panels, supporting energy efficiency and reducing overall consumption — reflecting the development's commitment to smarter, greener living.

MOOD BOARD

E X T E R I O R



RENDERS



23
ATELIER

ERA
URBAN HOMES BY BUILDCO



BUILDCO
NAME TO TRUST

RENDERS



RENDERS



RENDERS



RENDERS



MOOD BOARD

I N T E R I O R





BUILDCO
NAME TO TRUST



Find us at our offices at:

Anexartisias & Athinon Corner , NORA COURT,
5th floor, Flat/Office 501
3605, Limassol, Cyprus